

Bang on a Can: Cloud River Mountain
Bang on a Can All-Stars with Gong Linna
Technical Rider
2017

Cloud River Mountain is approximately 80 minutes long (including encore) and will be performed without an intermission.

AUDIO

FOH

A speaker system capable of delivering 100dB(A) to all areas of the auditorium from 20 - 20000HZ without distortion with sub bass units (preferably driven from an auxiliary send). Particular attention should be given to side seats and extreme front seating. Flown or part flown systems are preferable and also help to avoid audience sightline problems. Preferred brands Meyer, L-Acoustic, D&B & EAW. Please: no "home made systems". The whole system should be quiet and completely free of noise as the band have a very broad dynamic range, which can easily be compromised by a "noisy" system. **The console must be positioned in the centre area of the venue NOT under balcony or in booth.**

A minimum 48ch digital console. Preferred brands Soundcraft Vi4, Vi1, 6, Digidesign/AVID, Digico Yamaha, PM5DRH, CL, M7CL. No, Mackie, Behringer or semi-professional consoles.

Monitors

Minimum 32 input monitor console with at least 10 discrete outputs. 31 band eq to be inserted across all outputs, Klark Teknik, BSS, Ashley, Urei **NO Yamaha Q2031/1031**
10 Wedges on 10 sends + cue

Wedges should be low profile, high quality and all be the same (bi-amped preferred) e.g. Meyer UM1, Clair 12AM. The monitor system **must** be quiet and free of noise.

Mixes

- 1 – Drums
- 2 – Percussion
- 3 – Guitar
- 4 – Bass
- 5 – Cello
- 6 – Piano
- 7 – Clarinet
- 8 – Sheng
- 9 - Vocal

LIGHTING RIDER

9/25/17

Cloud-River-Mountain; BANG ON A CAN ALL-STARS with Gong Linna**VENUE PROVIDES the following:****LIGHTING**

- 25 Conventional profile fixtures (Source 4, Strand, etc.) **Over Stage**
- 15 Conventional profile fixtures (Source 4, Strand, etc.) **Front of House**
- 8 LED ground row striplights for cyc lighting - **Upstage Floor**
- 8 LED 50 Degree profile fixtures - **On sidelight booms**
- 1 Followspot – **Front of House**
- 5 Moving Spot fixtures – 1200w, with gobos and CMY mixing – **Over Stage**
Acceptable types – Mac Viper, VL3500, Clay-Paky 1500
- 3 Short sidelight booms (1m)
- 2 Tall sidelight booms (4m)
- 1 ETC Eos, Gio or Ion console
- 1 Tech table for rehearsal – console will be set up here for rehearsals and BOAC lighting director will program.
- X Intercom between BOAC lighting director and followspot operator

SOFT GOODS / DRAPES / SCENERY (Presenter provides):

- X Black marley dance floor sufficient to cover entire stage
- X Black velour masking legs and borders sufficient to mask entire stage (normally 5 pairs legs and 5 borders)
- 1 Full-stage white RP Cyclorama
- 1 Full-stage black scrim
- OR
- 1 Full-stage white seamless muslin cyclorama
- 1 Full-stage white seamed or seamless muslin cyclorama
- 1 Full-stage black scrim

- 3 Hanging pipes or points must be available in locations of BOAC's choosing to hang BOAC scenic drapes
- 9 10' (3048mm) pieces long electrical conduit or pipe (5/8" or 3/4" (18-20mm) outside diameter) to insert in pockets of BOAC drapes
- 3 5' (1524mm) pieces long electrical conduit or pipe (5/8" or 3/4" (18-20mm) outside diameter) to insert in pockets of BOAC drapes

BOAC PROVIDES:

- 3 BOAC provides 3 scenic drapes (see drawing for exact sizes) and hardware fittings

SCALED LIGHTING AND STAGE PLOT WILL BE PROVIDED BY BOAC BEFORE THE ENGAGEMENT. LIGHTING AND DRAPES MUST BE HUNG EXACTLY TO THE SPECIFICATIONS PROVIDED ON BOAC PLANS.

Bang on a Can Backline/Percussion List
Cloud River Mountain

Piano/Keyboards

Concert Grand Piano

Amplifiers

Fender Blues Deville or Vox AC30 Guitar Amp
GK800RB Bass Amp + Hartke 4 x 10 Cabinet

Percussion

5-piece Drumset, including the following:

14" x 20" Kick Drum + pedal
8" x 12" Rack Tom
9" x 13" Rack Tom
14" x 14" Floor Tom
5" x 14" Snare Drum + stand
18" Crash Cymbal + stand
13" or 14" Hi-Hat Cymbals + Stand
Ride Cymbal + Stand
Drummer's Throne
Carpet

1 Vibraphone

1 Concert Bass Drum on stand

Misc

15 solid top music stands

2 Bass Stools

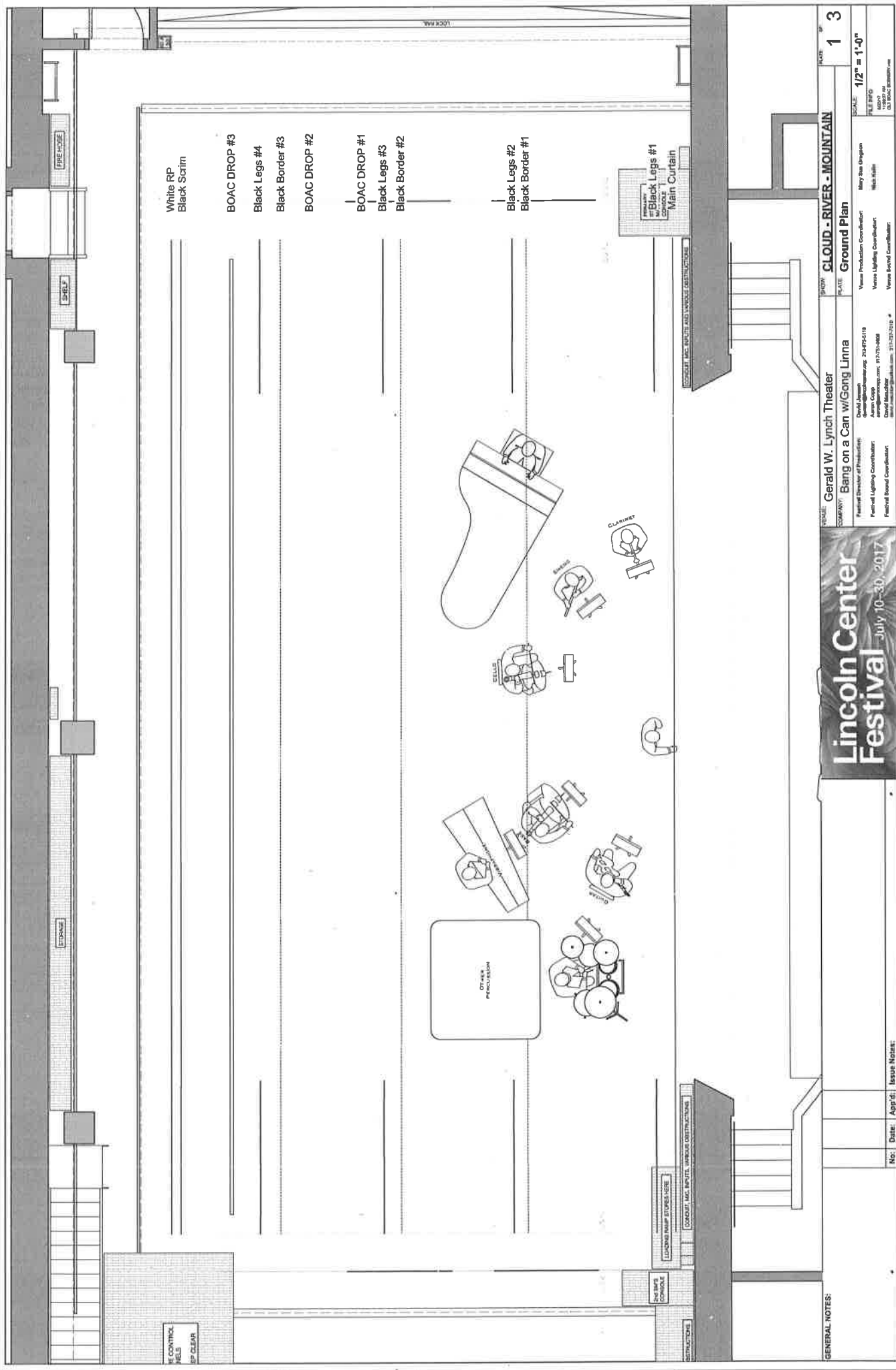
1 Guitar Stand

1 additional tall straight round based mic stands for mounting iPad

1 additional short straight round based mic stands for mounting iPad

OUTSIDE OF USA: 1 x 220V – 110V transformers with US type outlets





White RP
Black Scrim

BOAC DROP #3

Black Legs #4

Black Border #3

BOAC DROP #2

BOAC DROP #1

Black Legs #3

Black Border #2

Black Legs #2

Black Border #1

NO. OF SHEETS: 13

SCALE: 1/2" = 1'-0"

DATE: 1/27/17

PROJECT: BOAC Festival

PRODUCTION COMPANY: Gerald W. Lynch Theater
SHOW: Bang on a Can w/Gong Linna

CREATOR: David James
PRODUCTION MANAGER: 214-923-1119

TECHNICAL DIRECTOR: Antonio Capp
TECHNICAL ASSISTANT: 917-751-6688

HEAD LIGHTING COORDINATOR: David Rosenthal
HEAD SOUND COORDINATOR: Gerry Sauer

HEAD PRODUCTION COORDINATOR: Gerry Sauer
HEAD VENUE COORDINATOR: Rick Nishi

GENERAL NOTES:

NO. | Date | App'd | Issue Notes:

LINEAR DIMENSIONS: 31'-0" x 21'-0" #

**Lincoln Center
Festival
July 10-30, 2017**

CLOUD - RIVER - MOUNTAIN



THIS DRAWING CONTAINS VISUAL CONCEPTS AND CONSTRUCTION SUGGESTIONS ONLY.

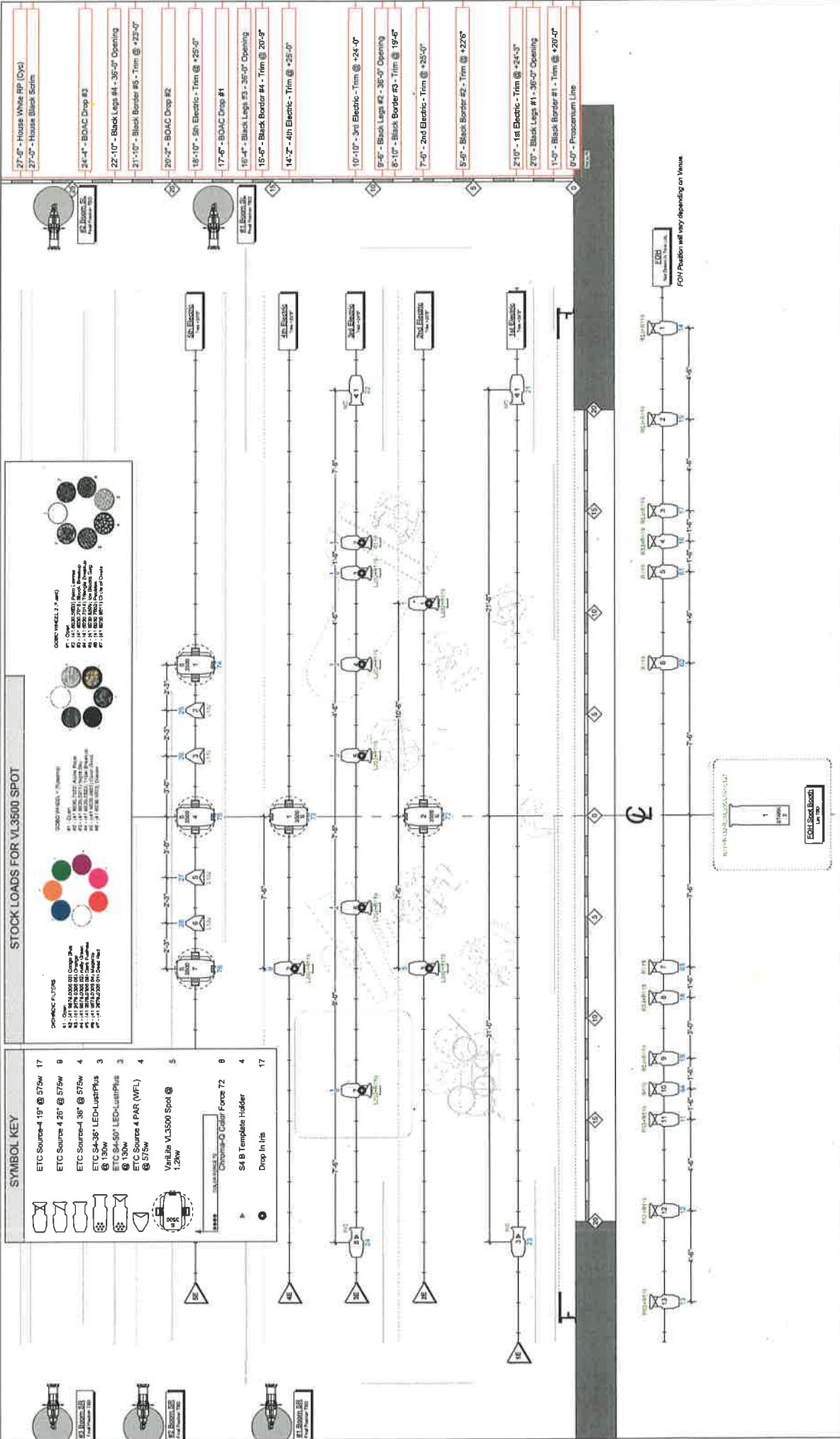
The Designer is not permitted to determine the design, and will not assume responsibility for the design. The Designer is responsible for the design, and will not assume responsibility for the design. All engineering, construction, handling, and installation shall be in accordance with the applicable codes, standards, and specifications of the Federal and Local Fire, Safety, Energy, and Environmental Codes.

A A R B O N		L I G H T I N G															
W	O	R	K	:	3	1	2	3	4	5	6	3	3	7			
S	E	L	L	:	9	1	7	1	8	9	0						
A	A	R	R	:	A	A	R	R	A	A	R	O	N	C	H	P	.
@ A B O N C O R P O R A T I O N																	

Show Title: **Tour Plot**
 Director: BOAC
 Production Manager: Aaron Copp
 Master Electrician:

Scale: 1/2" = 1' - 0"
 Date: 9/20/17

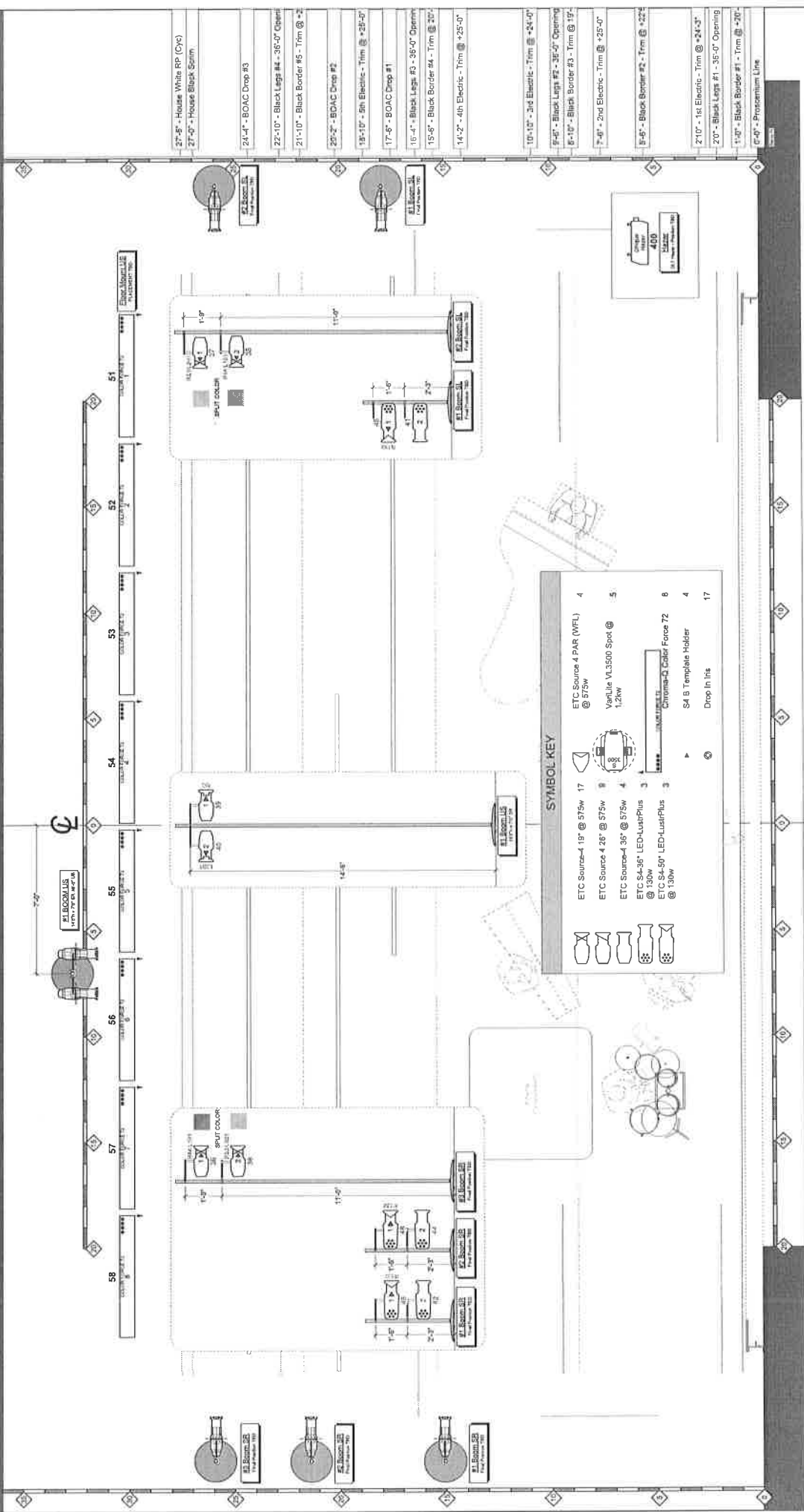
Sheet: **1** of **4**



STOCK LOADS FOR VL3500 SPOT

- SYMBOL KEY**
- ETC Source 4 15' @ 575w 17
 - ETC Source 4 26' @ 575w 9
 - ETC Source 4 36' @ 575w 4
 - ETC SA 36' LED-LastPlus 3
 - ETC SA 50' LED-LastPlus 3
 - ETC Source 4 PAR (VFL) 4
 - Vanitec VL3500 Spot @ 1.2kw 5
- SYMBOL KEY (continued)**
- Chrome-Q Collar Force 72 8
 - S4 B Template Holder 4
 - Drop In Its 17

- SYMBOL KEY (continued)**
- ETC Source 4 15' - House White RP (Cyc)
 - ETC Source 4 26' - House Black Scrim
 - ETC Source 4 36' - B0AC Drop #3
 - ETC Source 4 36' - Black Legs #4 - 36'-0" Opening
 - ETC Source 4 36' - Black Border #5 - Trim @ +25'-0"
 - ETC Source 4 36' - B0AC Drop #2
 - ETC Source 4 36' - 5th Electric - Trim @ +25'-0"
 - ETC Source 4 36' - B0AC Drop #1
 - ETC Source 4 36' - Black Legs #3 - 36'-0" Opening
 - ETC Source 4 36' - Black Border #4 - Trim @ 20'-0"
 - ETC Source 4 36' - 4th Electric - Trim @ +25'-0"
 - ETC Source 4 36' - 3rd Electric - Trim @ +24'-0"
 - ETC Source 4 36' - Black Legs #2 - 36'-0" Opening
 - ETC Source 4 36' - Black Border #3 - Trim @ 19'-0"
 - ETC Source 4 36' - 2nd Electric - Trim @ +25'-0"
 - ETC Source 4 36' - Black Border #2 - Trim @ +22'6"
 - ETC Source 4 36' - 1st Electric - Trim @ +24'-0"
 - ETC Source 4 36' - Black Legs #1 - 36'-0" Opening
 - ETC Source 4 36' - Black Border #1 - Trim @ +20'-0"
 - ETC Source 4 36' - Proscenium Line



SYMBOL KEY

	ETC Source-4 19" @ 575w	17
	ETC Source-4 26" @ 575w	9
	ETC Source-4 35" @ 575w	4
	ETC S4-36" LED-LuxarPlus @ 130w	3
	ETC S4-50" LED-LuxarPlus @ 130w	3
	ETC Source-4 PAR (WFL) @ 575w	4
	VanLite M.3500 Spot @ 1.2kw	5
	Chroma-Q Color Force 72	6
	S4 B Template Holder	4
	Drop In fit	17

THE DRAWING CONTAINS VISUAL CONCEPTS AND CONSTRUCTION SUGGESTIONS ONLY.

The Designer is unqualified to determine the design, and will not assume responsibility for incorrect engineering, construction, handling, or installation. The user must verify all details comply with the most stringent applicable Federal and Local Fire, Safety, Energy, and Environmental Codes.

SHOW TITLE: Tour Plot
PROJECT TITLE: 1/2" Deck Light Plot
DATE: 9/20/17

SCALE: 1/2" = 1' - 0"

NO.: 2
DATE: 9/20/17

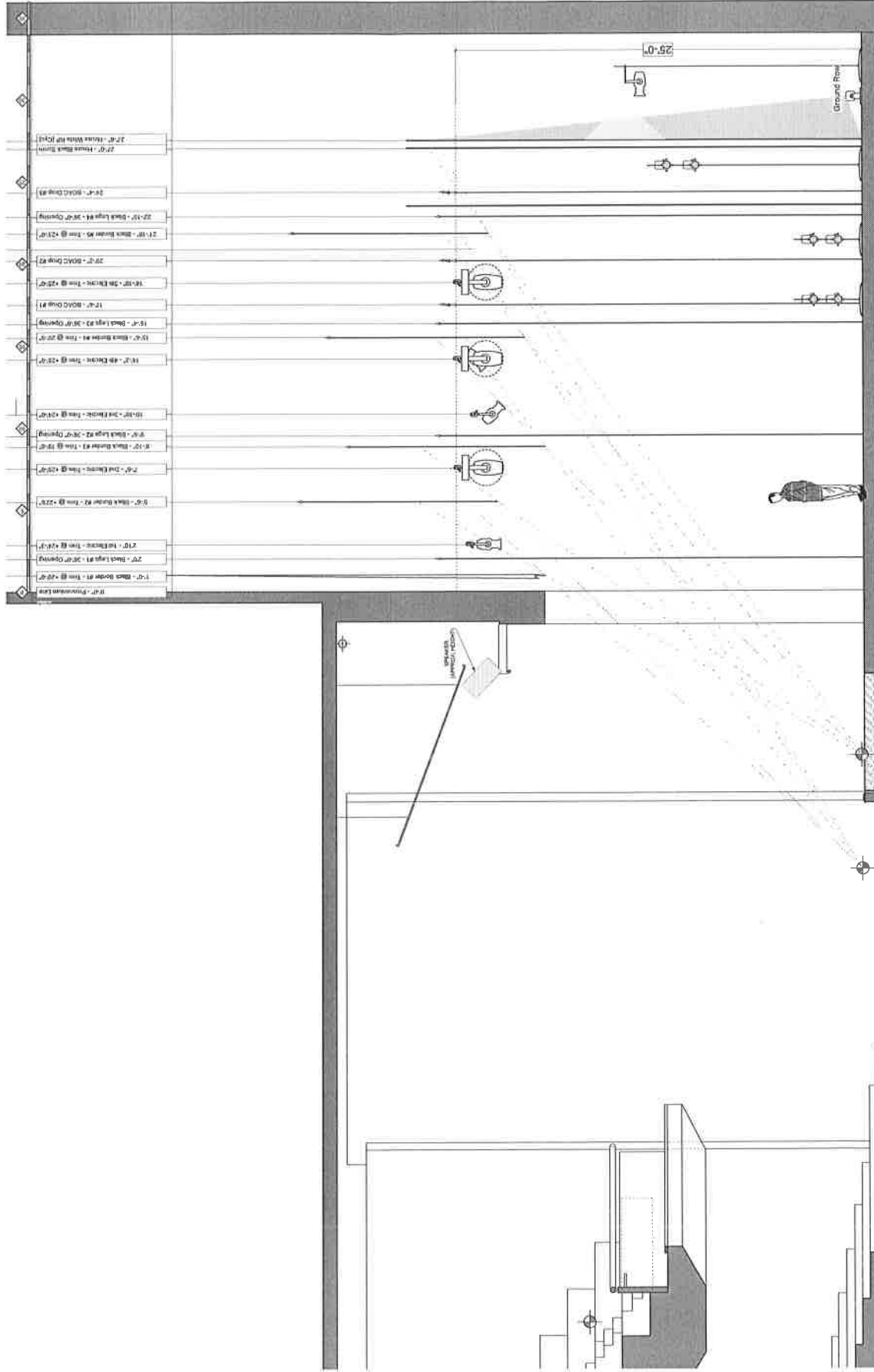
APP'D: [Signature]
DATE: [Date]

ISSUE NOTES:

WORKSHEET: 1 2 3 4 5 6 7 8 9 10 11 12 13 14 15 16 17 18 19 20 21 22 23 24 25 26 27 28 29 30 31 32 33 34 35 36 37 38 39 40 41 42 43 44 45 46 47 48 49 50 51 52 53 54 55 56 57 58 59 60 61 62 63 64 65 66 67 68 69 70 71 72 73 74 75 76 77 78 79 80 81 82 83 84 85 86 87 88 89 90 91 92 93 94 95 96 97 98 99 100

PROJECT INFORMATION:
 Director: [Name]
 Production Manager: [Name]
 Master Electrician: [Name]





- 1'-0" - Black Sconce #1 - 10' @ 120°
- 1'-0" - Black Sconce #1 - 10' @ 120°
- 2'-0" - Black Sconce #1 - 10' @ 120°
- 2'-0" - Black Sconce #1 - 10' @ 120°
- 3'-0" - Black Sconce #1 - 10' @ 120°
- 4'-0" - Black Sconce #1 - 10' @ 120°
- 5'-0" - Black Sconce #1 - 10' @ 120°
- 6'-0" - Black Sconce #1 - 10' @ 120°
- 7'-0" - Black Sconce #1 - 10' @ 120°
- 8'-0" - Black Sconce #1 - 10' @ 120°
- 9'-0" - Black Sconce #1 - 10' @ 120°
- 10'-0" - Black Sconce #1 - 10' @ 120°
- 11'-0" - Black Sconce #1 - 10' @ 120°
- 12'-0" - Black Sconce #1 - 10' @ 120°
- 13'-0" - Black Sconce #1 - 10' @ 120°
- 14'-0" - Black Sconce #1 - 10' @ 120°
- 15'-0" - Black Sconce #1 - 10' @ 120°
- 16'-0" - Black Sconce #1 - 10' @ 120°
- 17'-0" - Black Sconce #1 - 10' @ 120°
- 18'-0" - Black Sconce #1 - 10' @ 120°
- 19'-0" - Black Sconce #1 - 10' @ 120°
- 20'-0" - Black Sconce #1 - 10' @ 120°
- 21'-0" - Black Sconce #1 - 10' @ 120°
- 22'-0" - Black Sconce #1 - 10' @ 120°
- 23'-0" - Black Sconce #1 - 10' @ 120°
- 24'-0" - Black Sconce #1 - 10' @ 120°
- 25'-0" - Black Sconce #1 - 10' @ 120°

CLOUD - RIVER - MOUNTAIN

1/4" Section

Scale: 1/4" = 1'-0"

Date: 9/20/17

BDAC
Aeron Corp

Director:
Production Manager:
Master Electrician:

3
4

THIS DRAWING CONTAINS VISUAL CONCEPTS AND CONSTRUCTION SUGGESTIONS ONLY. The Designer is not responsible for the accuracy of the information shown on this drawing, and will not assume responsibility for any errors or omissions. All construction shall comply with the most stringent applicable Federal and Local Fire, Safety, Energy, and Environmental Codes.



THIS DRAWING CONTAINS VISUAL CONCEPTS AND CONSTRUCTION SUGGESTIONS ONLY.

No. | Date: | App'd: | Issue Notes:

General Information & Schedule

Personnel

Actual crew numbers to be determined in discussions between house crew heads and Bang on a Can production people.

Bang on a Can expects to provide during Load-in, Tech Rehearsals and Performance:

- 1 - Sound Designer/Front Of House Audio Operator
- 1 - Scenic/Lighting Supervisor

Bang on a Can sound engineer will operate the FOH console for the show and must be allowed full access to all components of the sound system (cross-over's, processors, eq's etc.). In installations with fixed eq another equalizer must be provided for our engineer.

Bang on a Can lighting supervisor will supervise the installation of the scenic fabric panels and focus/programming of lighting, calls light cues (or maybe runs the console) and calls the followspot cues.

Venue will provide during Load-in, Technical Rehearsals and Strike (as necessary):

- x sufficient electricians to hang lighting in advance of BOAC's arrival
- 6 Electricians for focus (morning of show)
- 3 Electricians for rehearsal and show (1 light board operator, 1 deck electrician, 1 followspot operator)
- 1 audio system technician
- 2 stagehands for load in and load out of bands equipment.

SAMPLE SCHEDULE:

Prior to Day of 1st Performance:

Pre-hang of full lighting plot must be completed on the day before 1st performance.

Installation of sound system preferred on day before 1st performance.

Day of 1st Performance:

8am-1pm: BOAC & Venue crew: lighting programming/focus/tech, audio soundcheck

2-3pm: Musicians arrive, final setup

3-6pm: Soundcheck/Rehearsal

6-7:30pm: Break, Piano Tuning, Dinner

7:30pm: Doors

8pm: Performance

General

The P.A. & Projection systems should be set up and tested before the musicians arrive. All mic lines and monitors should be laid out and proven. We can supply some of our own mics but this may involve a charge to cover excess baggage and insurance.

The venue will supply all cabling and mic stands, which should be in good working order and have booms; black stands are preferred (see input list).

Please contact us to discuss if any of the above causes concern or you have any questions regarding our technical set up. Substitutions are always possible to some degree but please call first to discuss them.

AC power drops should be provided on stage as per stage plan delivering 110V 60 Hz as well as suitable power for local backline.

Should you have any questions regarding this rider please contact Kenny Savelson, Executive Director/Bang on a Can; ph +1 718 852 7755; email: Kenny@bangonacan.org or production manager Sruly Lazaros: sruly@bangonacan.org

BANG ON A CAN ALL-STARS
HOSPITALITY/CONCESSIONS/GUEST TICKETS RIDER

HOSPITALITY

a) DRESSING ROOM HOSPITALITY is to be provided by presenter at the time of artist's arrival.

Presenter agrees to provide the following at no cost to artist:

Fresh Coffee (regular and decaffeinated)

Herbal and regular tea

Non-carbonated water (no gas)

Sparkling mineral water

Soda

Dry red and white wine (1 bottle of each)

Quality beer (12 bottles) - local brewery preferred, if available

Milk, Sugar, Honey, 2 fresh lemons

Fruit Bowl: (Bananas, Melon, Grapes, etc)

Vegetable Plate with Yogurt Dip: (Celery, Carrots, Broccoli, etc)

Deli Tray including sliced cheeses, non-red meats (turkey, chicken), sliced tomatoes and cucumbers, mustard & mayonnaise

Fresh Bread for sandwiches

Candy Bars, fresh nuts

Napkins, Glasses, Plates, Knives, Forks, Bottle Opener, Trash Can

b) CATERING is to be provided immediately following soundcheck (2 hours prior to performance) or after the concert performance: Ten (10) well-balanced hot meals including vegetarian options.

CONCESSIONS

Presenter agrees to provide a concession stand (conference-style table, chair, etc) with a salesperson present throughout the duration of the concert period, including both intermission and for a reasonable amount of time immediately after the concert has ended. The concession stand shall be set up in a centrally located, visible area inside the concert hall preferably by an entrance. All sums received from the sales of Artist's merchandise will be paid to Artist by Presenter immediately after the concert.

TICKETS

Ten (10) complimentary house tickets from among the highest priced tickets for each performance, unless agreed otherwise in advance. This allotment is in addition to any tickets offered by Presenter to the press, to the staff and panelists from state, regional or federal music and arts agencies. Presenter will be the only party authorized to issue such complimentary tickets.